

GOOD HOUSEKEEPING

25 Charming Entryway Ideas to Leave a Lasting Impression

Give guests a warm welcome, whether your space is small or large.

GH | BY [JULIANA LABIANCA](#) AND [ALYSSA GAUTIERI](#) Updated: Feb 16, 2023

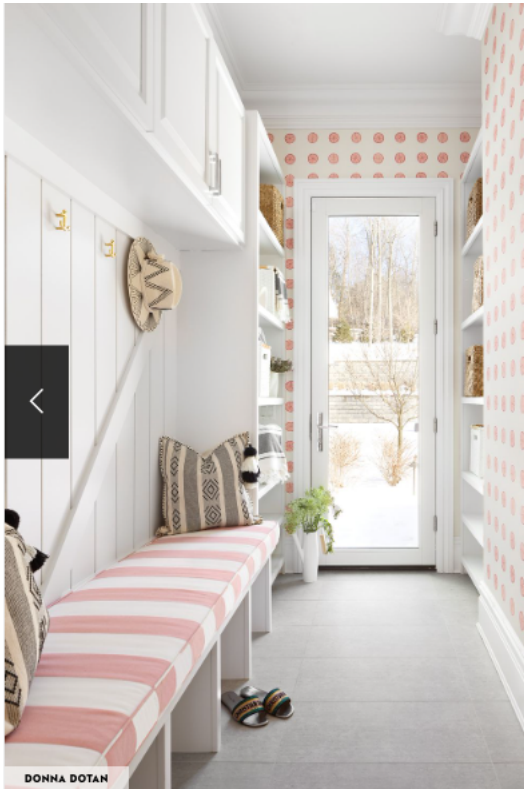
SAVE ARTICLE



Set the tone for the rest of your home with an entryway that reflects your style, whether that be traditional, farmhouse, modern or maximalist. Consider the entry your first opportunity to impress guests — even if you're a fan of neutral color palettes, the foyer is the perfect place to experiment with color and pattern in a small dose. No matter what type of space you're working with — whether you've got a [large mudroom](#), a tiny foyer or a narrow entryway — these charming **entryway ideas** provide an instant refresh.

Not only should a well-designed entry introduce your home's personality, it should serve an important purpose: an [organized space](#) to take off your shoes, hang your bags, store your keys, etc. Dress up your space with stylish storage, like built-ins, a console table or decorative bins. Add an accent mirror and statement light fixture, so you can do a quick outfit check before you rush out the door. And if you have the space, some sort of seating (like a bench or stool) provides a place to put on or take off shoes.

Take notes from these gorgeous entryway design ideas on par with [2023 interior design trends](#) — which means statement rugs, gold fixtures and [trending wallpaper designs](#). Turns out, something as simple as [a fresh coat of paint](#), a vintage piece of furniture or modern wall decor can completely revamp your home or apartment.



DOHNA DOTAN

4 of 25

Pretty Pinks

Associated with love and happiness, pink is a perfect hue to welcome your guests. Interior designer [Abby Gruman](#) uses pink polka dots for the walls and a pink and white stripe pattern for the entryway bench – bringing in pretty pops without going over the top.



KIRSTEN FRANCIS

16 of 25

Built-In Bench

Take a note from designer [Abby Gruman](#) and go for a long built-in bench. The best part? With potential storage beneath, you can add decorative baskets for an easy place to store shoes, umbrellas or outerwear.